

CitoPress-5



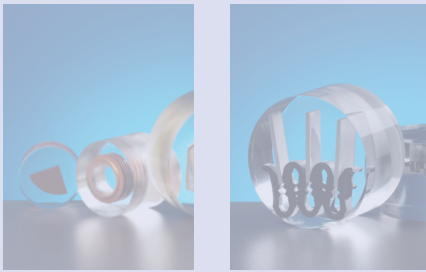
The fastest way to mounting and increased productive capacity



CitoPress-5 is offering ultra-short mounting times and maximum user-friendliness

Features

- Low mass mounting units for fast heating
- Individually controlled parameters: temperature, force/pressure, heating time, cooling time
- Automatic detection of cylinder dimension
- Display and touch pad controls
- Low build-height for easy visual control
- Triple-threaded, no-jam top closure
- Simple access for easy cleaning
- Top closure elevator for easy positioning
- Powerful heating unit (1000 W)
- Hydraulic system with high accuracy pressure control
- 3 preset cooling levels (Hi/Med/Lo)



ClaroFast is a transparent hot mounting resin, offering you transparent mounts with a clear view to all sample details

CitoPress-5 increases your capacity

CitoPress-5 is a powerful mounting press, giving you high speed and maximum user-friendliness. The result is faster turnaround and increased productive capacity. CitoPress-5 is provided with a hydraulic system, where the pressure is controlled with very high accuracy, securing fragile specimens. CitoPress-5 is equipped with a single cylinder and all settings and dosing are manual, which makes it ideal for customers doing few samples.

User-friendly software

Automatic detection of cylinder dimension

When changing the cylinder dimension, the press automatically detects the new size, and adjusts the method parameters accordingly. In this fashion, errors from an incorrect cylinder setting are eliminated. Pressure as well as heating time and cooling time can be controlled individually, ensuring full flexibility in mounting.

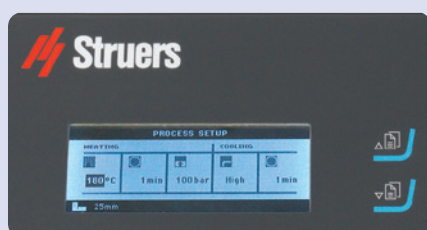
Acoustic alarm

CitoPress-5 comes with an acoustic alarm, notifying the user when the mount is ready.

User-friendly design

Display and touch pad controls

CitoPress-5 features a LCD display, which graphically shows parameter settings and mounting progress. Changing parameters is fast by using the touch pad controls.



The display and touch pad controls facilitate fast selection of parameters

Low build height

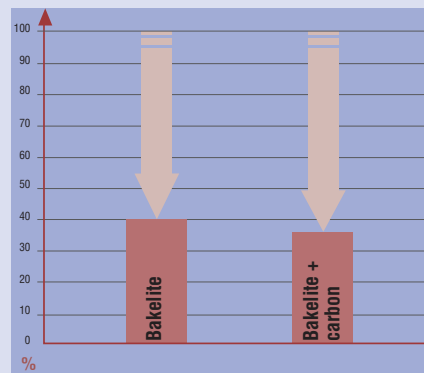
Low build height means easy visual inspection of the mounting cylinder. This is relevant e.g. if tall, thin samples are to be mounted, and the operator wants to check if the sample still stands after adding resin. Another typical situation would be if multiple samples are to be included in the same mount.

Easy cleaning

The door to the mounting unit tower swings open for easy access to the mounting unit.

Compact mounting units

CitoPress-5 mounting times for different resins, compared to competing presses (competing presses = 100%)



CitoPress-5 can reduce mounting times to nearly one third, compared to competing presses. (Applies for a 30 mm dia. cylinder. When using a 40 mm dia. cylinder CitoPress-5 can reduce mounting times by half)



Low mass mounting unit and top closure



Top closure elevator for easy handling

CitoPress-5 is equipped with compact, low-mass mounting units significantly reducing heating time. Available cylinder diameters: 25, 30, 40, 50 mm, 1¼" and 1½".

Simple top closure

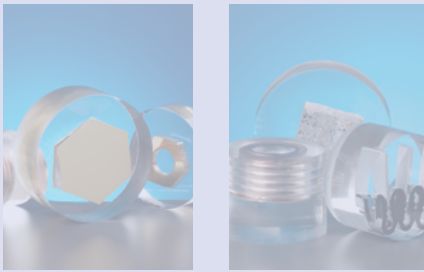
The press comes with a top-closure elevator. Any handling problems of the top closure as seen on other presses are solved by the top closure design. The CitoPress-5 top closure is with triple-thread. Thus, the entire process of mounting the top closure follows with a minimum of effort.

Saves money and resource

The benefit of shorter heating times is reduced energy consumption. Compared to competing presses, less than half the power is required to heat the mounting unit.

Three preset cooling levels

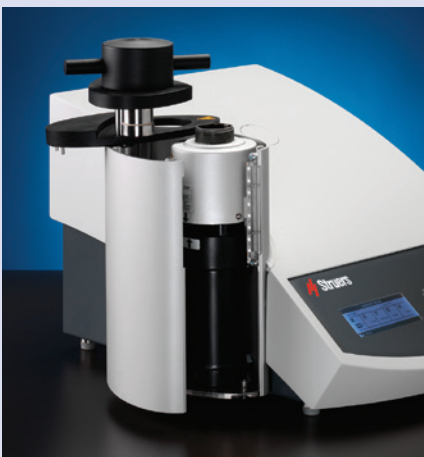
CitoPress-5 comes with three preset cooling levels (Hi/Med/Lo). The main advantage is water saving, meaning that the MEDIUM mode can be used in most cases, and water usage reduced significantly. Thermoplastic resins require far longer cooling times than thermosetting. With CitoPress-5, the cooling level can be set to match the resin. E.g., instead of reducing the cooling level by manually reducing the flow at the water tap, the level can be reduced by selecting the LOW mode.



HandyDoser

HandyDoser is a manual doser which makes resin dosing simple and convenient. No spoons or funnels are required any more, and dosing the right volume becomes really easy. Since there is less mess, cleaning of the hot mounting press is reduced to a minimum.

The dosing unit doses ca 5 ml at a time, and holds enough resin for ca 30 mounts, or ca 550 ml.



Specifications

Cat. no

CitoPress-5

Automatic, electro-hydraulic hot mounting press with one cylinder.
Mounting units are ordered separately.

05776127

Mounting units

Consisting of heating/cooling unit, lower ram and top closure with upper ram.

Upper ram with waistline.

Cylinder diameter 1½"

05788127

Cylinder diameter 1¼"

05788227

Cylinder diameter 25 mm

05788327

Cylinder diameter 30 mm

05788427

Cylinder diameter 40 mm

05788527

Cylinder diameter 50 mm

05788627

Chamfered ram

Lower, chamfered ram. To prevent sharp edge on mounted sample.

Cylinder diameter 25 mm

05786900

Cylinder diameter 30 mm

05786901

Cylinder diameter 1¼"

05786902

Cylinder diameter 1½"

05786903

Cylinder diameter 40 mm

05786904

Cylinder diameter 50 mm

05786905

Accessories

HandyDoser

05736902

HandyDoser

Easy access means quick change of mounting units and easy cleaning

Struers ApS
 Pederstrupvej 84
 DK-2750 Ballerup, Denmark
 Phone +45 44 600 800
 Fax +45 44 600 801
 struers@struers.dk
 www.struers.com

Technical data

SUBJECT	SPECIFICATION
Mounting unit	
Mounting dia.	25, 30, 40, 50 mm, 1¼", 1½"
Mounting press	
Mounting parameters	
Pressure	50-350 bar / 725-5076 psi in steps of 25 bar / 363 psi*
Heating time	1-15 min in steps of 0.5 min
Heating temperature	120-150-180°C / 248-302-356°F
Cooling time	1-15 min in steps of 0.5 min
Cooling rate	High: Full flow Medium: 20% of full flow Low: 3% of full flow
Software and electronics	
Controls	Touch pads
LCD display with white LED backlight	160x240 dots
Noise levels	
Idle	0 dB (A)
Max.	63 dB(A)
Working environment	
Temperature, operational	5-40°C / 41-104°F
Humidity, non-condensing	0-95% RH
Supply	
Voltage / frequency	100-120V / 50-60Hz, 200-240V / 50-60Hz Auto detection and auto switch over
Power inlet (IEC320-C13)	1-phase (N+L+PE) or 2-phase (L1+L2+PE) <i>The electrical installation must comply with "Installation Category II"</i>
Power, idle	8W
Power, max.	1300W@100-120V / 1300W@200-240V
Current, max.	13A@100-120V / 5.6A@200-240V
Water pressure (tap water)	1-10 bar / 14.5-145 psi
Water inlet	10 mm / ¾"
Water outlet	ø13 mm
Dimensions and weight	
Width	480 mm / 19"
Depth	560 mm / 22"
Height	440 mm / 17½"
Weight	34 kg / 75 lbs

* With a 50 mm cylinder the pressure can be set to 50 - 250 bar / 725 - 3626 psi.

AUSTRALIA & NEW ZEALAND

Struers Australia
 27 Mayneview Street
 Milton QLD 4064
 Australia
 Tel.: +61 7 3512 9600
 Fax: +61 7 3369 8200
 info.au@struers.dk

BELGIUM (Wallonie)
Struers S. A. S.
 370, rue du Marché Rollay
 F-94507 Champigny
 sur Marne Cedex
 Tel.: +33 1 5509 1430
 Fax: +33 1 5509 1449
 struers@struers.fr

BELGIUM (Flanders)
Struers GmbH Nederland
 Zomerdijk 34 A
 3143 CT Maassluis
 Tel.: +31 (10) 599 7209
 Fax: +31 (10) 599 7201
 netherlands@struers.de

CANADA
Struers Ltd.
 7275 West Credit Avenue
 Mississauga, Ontario L5N 5M9
 Tel.: +1 905-814-8855
 Fax: +1 905-814-1440
 info@struers.com

CHINA
Struers Ltd.
 No. 1696 Zhang Heng Road
 Zhang Jiang Hi-Tech Park
 Shanghai 201203, P.R. China
 Tel.: +86 (21) 6035 3900
 Fax: +86 (21) 6035 3999
 struers@struers.cn

CZECH REPUBLIC & SLOVAKIA
Struers GmbH Organizační složka
 vědeckotechnický park
 Přílepská 1920,
 CZ-252 63 Roztoky u Prahy
 Tel.: +420 233 312 625
 Fax: +420 233 312 640
 czechrepublic@struers.de
 slovakia@struers.de

GERMANY
Struers GmbH
 Carl-Friedrich-Benz-Straße 5
 D- 47877 Willich
 Tel.: +49 (0) 2154 486-0
 Fax: +49 (0) 2154 486-222
 verkauf@struers.de

FRANCE
Struers S. A. S.
 370, rue du Marché Rollay
 F-94507 Champigny
 sur Marne Cedex
 Tel.: +33 1 5509 1430
 Fax: +33 1 5509 1449
 struers@struers.fr

HUNGARY
Struers GmbH
 Magyarországi Fióktelepe
 2040 Budaörs
 Szabadság utca 117
 Tel.: +36 (23) 80 60 90
 Fax: +36 (23) 80 60 91
 Email: hungary@struers.de

IRELAND
Struers Ltd.
 Unit 11 Evolution@ AMP
 Whittle Way, Catcliffe
 Rotherham S60 5BL
 Tel.: +44 0845 604 6664
 Fax: +44 0845 604 6651
 info@struers.co.uk

ITALY
Struers Italia
 Via Monte Grappa 80/4
 20020 Arese (MI)
 Tel.: +39-02/38236281
 Fax: +39-02/38236274
 struers.it@struers.it

JAPAN
Struers K. K.
 Takanawa Muse Bldg. 1F
 3-14-13 Higashi-Gotanda,
 Shinagawa
 Tokyo
 141-0022 Japan
 Tel.: +81 3 5488 6207
 Fax: +81 3 5488 6237
 struers@struers.co.jp

NETHERLANDS

Struers GmbH Nederland
 Zomerdijk 34 A
 3143 CT Maassluis
 Tel.: +31 (10) 599 7209
 Fax: +31 (10) 599 7201
 netherlands@struers.de

NORWAY
Struers ApS, Norge
 Sjøskogenveien 44C
 1407 Vinterbro
 Tel.: +47 970 94 285
 info@struers.no

AUSTRIA
Struers GmbH
 Zweigniederlassung
 Österreich
 Betriebsgebiet Puch Nord 8
 5412 Puch
 Tel.: +43 6245 70567
 Fax: +43 6245 70567-78
 austria@struers.de

POLAND
Struers Sp. z o.o.
 Oddział w Polsce
 ul. Jasnogórska 44
 31-358 Kraków
 Tel.: +48 12 661 20 60
 Fax: +48 12 626 01 46
 poland@struers.de

ROMANIA
Struers GmbH, Sucursala Bucuresti
 Str. Preciziei nr. 6R
 062203 sector 6, Bucuresti
 Tel.: +40 (31) 101 9548
 Fax: +40 (31) 101 9549
 romania@struers.de

SWITZERLAND
Struers GmbH
 Zweigniederlassung
 Schweiz
 Weissenbrunnstraße 41
 CH-8903 Birmensdorf
 Tel.: +41 44 777 63 07
 Fax: +41 44 777 63 09
 switzerland@struers.de

SINGAPORE
Struers Singapore
 627A Aljunied Road,
 #07-08 BizTech Centre
 Singapore 389842
 Tel.: +65 6299 2268
 Fax: +65 6299 2661
 struers.sg@struers.dk

SPAIN
Struers España
 Camino Cerro de los
 Gamos 1
 Building 1 - Pozuelo de
 Alarcón
 CP 28224 Madrid
 Tel.: +34 917 901 204
 Fax: +34 917 901 112
 struers.es@struers.es

FINLAND
Struers ApS, Suomi
 Hietalahdenranta 13
 00180 Helsinki
 Tel.: +358 (0)207 919 430
 Fax: +358 (0)207 919 431
 finland@struers.fi

SWEDEN
Struers Sverige
 Box 20038
 161 02 Bromma
 Tel.: +46 (0)8 447 53 90
 Fax: +46 (0)8 447 53 99
 info@struers.se

UNITED KINGDOM
Struers Ltd.
 Unit 11 Evolution @ AMP
 Whittle Way, Catcliffe
 Rotherham S60 5BL
 Tel.: +44 0845 604 6664
 Fax: +44 0845 604 6651
 info@struers.co.uk

USA
Struers Inc.
 24766 Detroit Road
 Westlake, OH 44145-1598
 Tel.: +1 440 871 0071
 Fax: +1 440 871 8188
 info@struers.com

Struers' equipment is in conformity with the provisions of the applicable International Directives and their apurtenant Standards. (Please contact your local supplier for details)

Struers' products are subject to constant product development. Therefore, we reserve the right to introduce changes in our products without notice